



9 Dorchester Close, Maidenhead, SL6 6RX
£550,000 Freehold

Situated on the popular Cranbrook Drive estate, a well presented three bedroom semi detached neo-Georgian home in a quiet traffic free walkway within a few minutes walk of National Trust land at Pinkneys Green. Furze Platt station is within easy distance with connections to Maidenhead and the Elizabeth Line station

Entrance Hall

Living/Dining Room

Double doors to patio and west facing garden, laminate oak flooring

Kitchen

Integrated double oven and microwave, space for fridge, freezer, washing machine and tumble dryer, door to garden

Cloakroom

WC, vanity sink unit, tiled floor

Bedroom

Double room

Bedroom

Double room

Bedroom

Single room

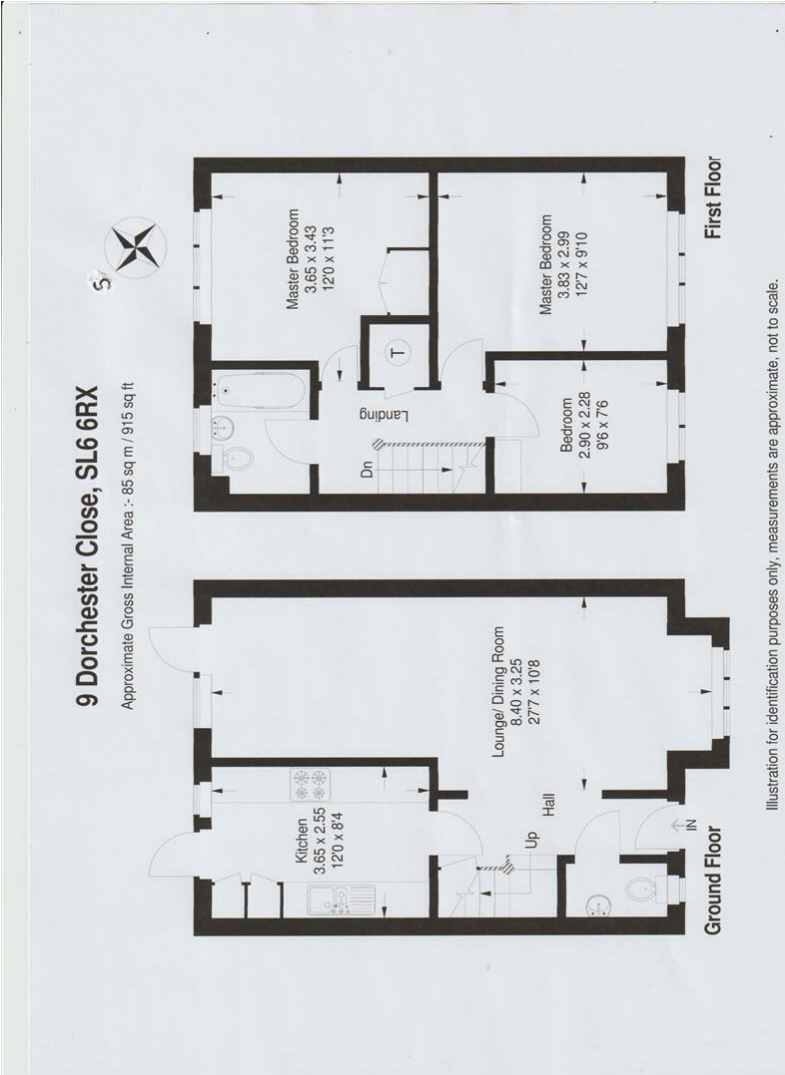
Bathroom

Vanity sink unit, electric shower over bath, WC

Outside

Single garage with electricity at the rear of the garden, further parking space. Attractive west facing garden with patio area.

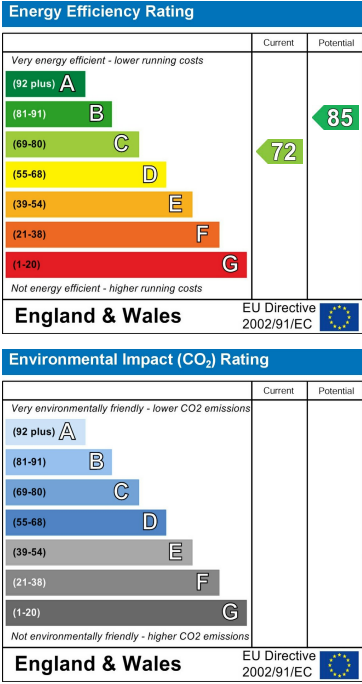
Floor Plan



Area Map



Energy Efficiency Graph



These particulars, whilst believed to be accurate are set out as a general outline only for guidance and do not constitute any part of an offer or contract. Intending purchasers should not rely on them as statements of representation of fact, but must satisfy themselves by inspection or otherwise as to their accuracy. No person in this firms employment has the authority to make or give any representation or warranty in respect of the property.